

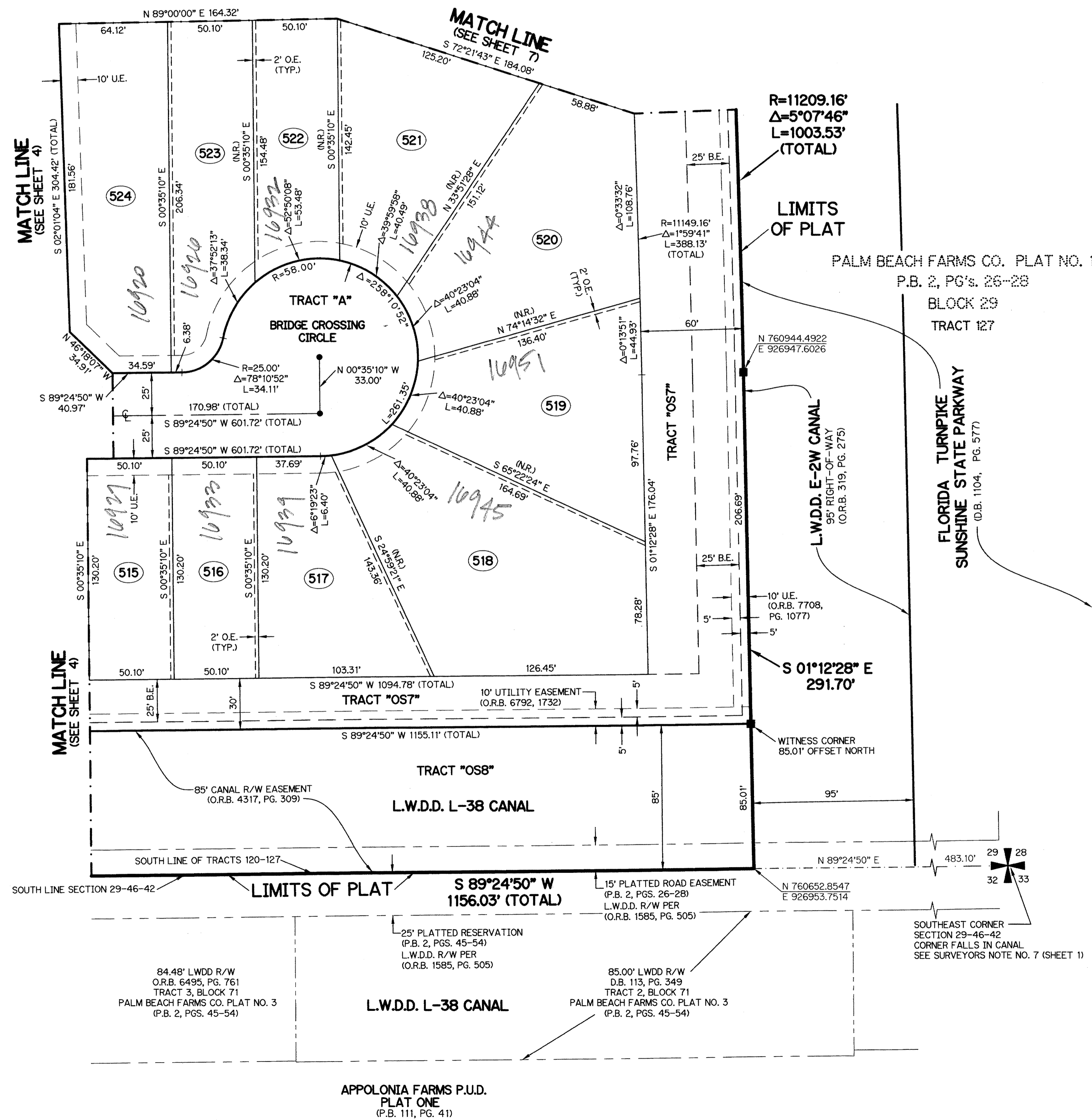
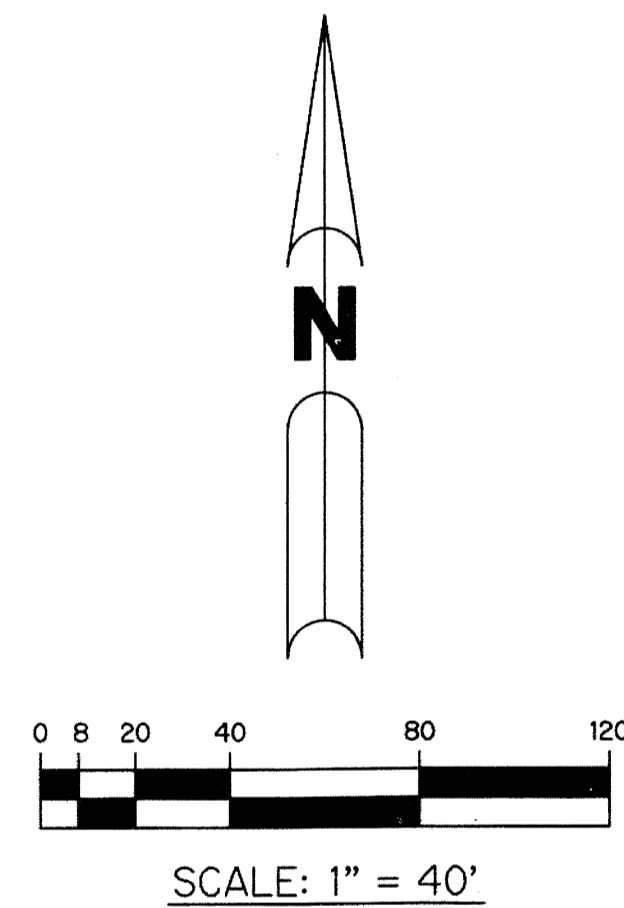
# BRIDGES - PLAT EIGHT

BEING A REPLAT OF ALL OF TRACTS 125 AND 126 AND A PORTION OF TRACTS 98 THROUGH 101, 124 AND 127 ALL LYING WITHIN BLOCK 29, PALM BEACH FARMS COMPANY PLAT NO. 1, AS RECORDED IN PLAT BOOK 2, PAGES 26 THROUGH 28 OF THE PUBLIC RECORDS OF PALM BEACH COUNTY, FLORIDA AND LYING WITHIN SECTION 29, TOWNSHIP 46 SOUTH, RANGE 42 EAST

SHEET 8 OF 8

THIS INSTRUMENT PREPARED BY  
PERRY C. WHITE, P.S.M. 4213, STATE OF FLORIDA  
SAND & HILLS SURVEYING, INC.  
8461 LAKE WORTH ROAD, SUITE 410  
LAKE WORTH, FLORIDA 33467  
LB-7741

190

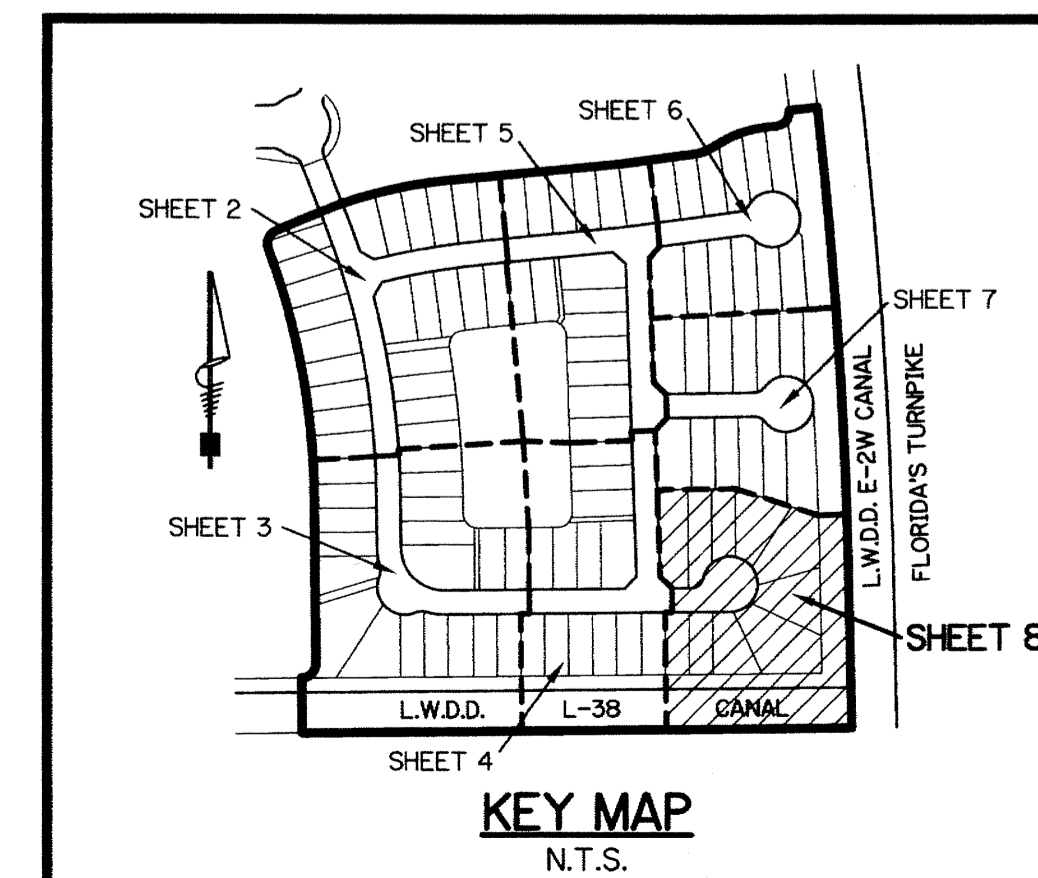


**LEGEND:**

- - SET PERMANENT REFERENCE MONUMENT  
4"x4" CONCRETE MONUMENT WITH  
1.5" DISK STAMPED L.B. #7741
  - - FOUND PERMANENT REFERENCE MONUMENT  
4"x4" CONCRETE MONUMENT WITH  
1.5" DISK STAMPED L.B. #7741
  - - SET PERMANENT CONTROL POINT  
NAIL WITH 1.25" DISK STAMPED L.B. #7741
  - - FOUND PERMANENT CONTROL POINT  
NAIL WITH 1.25" DISK STAMPED L.B. #7741
  - Δ - DELTA ANGLE
  - B.E. - BUFFER EASEMENT
  - CB - CHORD BEARING
  - CH - CHORD DISTANCE
  - C - CENTERLINE
  - D.B. - DEED BOOK
  - D.E. - DRAINAGE EASEMENT
  - F.P.L. - FLORIDA POWER & LIGHT
  - G.E. - GRADING EASEMENT
  - L - ARC LENGTH
  - L.A.E. - LIMITED ACCESS EASEMENT
  - L.M.A.E. - LAKE MAINTENANCE ACCESS EASEMENT
  - L.M.E. - LAKE MAINTENANCE EASEMENT
  - L.W.D.D. - LAKE WORTH DRAINAGE DISTRICT
  - NR - NOT RADIAL
  - N.T.S. - NOT TO SCALE
  - O.R.B. - OFFICIAL RECORD BOOK
  - O.E. - MAINTENANCE & ROOF OVERHANG EASEMENT
  - P.B.C.U.E. - PALM BEACH COUNTY UTILITY EASEMENT
  - P.B. - PLAT BOOK
  - P.C.P. - PERMANENT CONTROL POINT
  - PGS. - PAGES
  - P.O.B. - POINT OF BEGINNING
  - P.O.C. - POINT OF COMMENCEMENT
  - P.S.M. - PROFESSIONAL SURVEYOR AND MAPPER
  - R - RADIUS
  - R/W - RIGHT-OF-WAY
  - R.D. & D. - ROAD, DYKE AND DITCH RESERVATION
  - S.T. - SURVEY TIE
  - U.E. - UTILITY EASEMENT
- N 1000000.0000 - DENOTES STATE PLANE COORDINATES  
E 1000000.0000

**NOTE:**

COORDINATES SHOWN ARE GRID COORDINATES DATUM = NAD 83 (1990 ADJUSTMENT) AS READJUSTED BY PALM BEACH COUNTY IN 1998.  
ZONE = FLORIDA EAST ZONE  
LINEAR UNIT = U.S. SURVEY FEET  
COORDINATE SYSTEM = 1983 STATE PLANE TRANSVERSE MERCATOR PROJECTION  
ALL DISTANCES ARE GROUND  
SCALE FACTOR = 1.00002237  
PLAT BEARING = GRID BEARING



**KEY MAP**  
N.T.S.